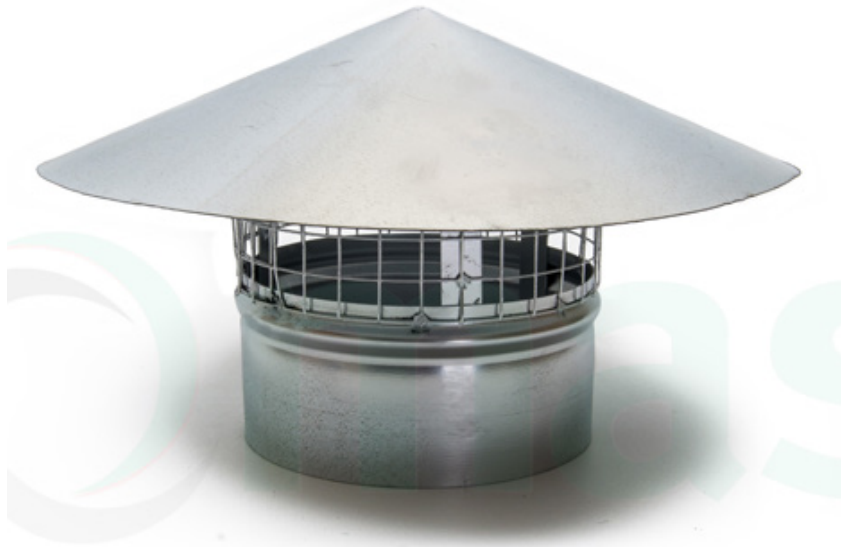


Roof Cowl

SD-RC

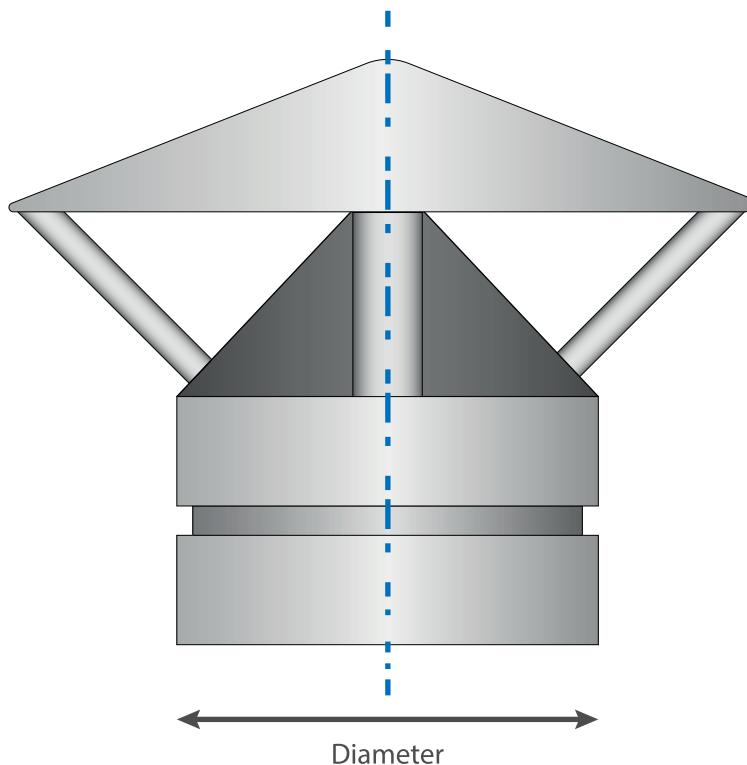


Description

Roof Cowls are used in applications where a duct termination is required at roof level and are used to discharge air in a vertical position. They come fitted with mesh which prevents wildlife from entering into the duct termination point.

Dimensions

DIAMETER (mm)
80
100
125
150
160
180
200
224
250
280
300
315
355
400
450
500
560
600



Material & Finish

Material: Galvanised Steel

Colour: Silver

Please contact Glovers sales department for more information.